

STATEMENT OF LANDSCAPE INTENT

310 EWINGSDALE RD, BYRON BAY



C O N S U L T I N G

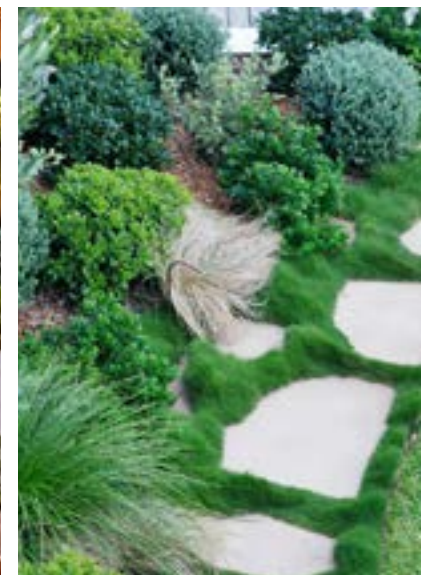
A Contemporary Coastal Landscape Design

The landscape design for 310 Ewingsdale Street aims to provide a contemporary design with thoughtful yet understated use of materials and a coastal sub-tropical landscape that compliments the proposed architectural style enhancing user experience whilst acknowledging the sites coastal location.

The site provides the opportunity to create a landscape design that not only benefit residents, but the wider community.

The design seeks to:

- Provide a contemporary landscape that compliments the proposed architectural style and enhances the existing streetscape.
- A contextually appropriate softscape planting palette which features a variety of native plant species which will provide shade and amenity for the users.
- Planting will achieve a low maintenance sculptured landscape whilst offering lush colours of greenery, creating a strong visual connection between indoor and outdoor living areas.
- The combination of stone pavers, gravels and carefully selected planting creates a sculptural, coastal landscape which acts as a space for different uses and activities to take place for the residents.



Statement of Landscape Intent

310 EWINGSDALE RD, BYRON BAY

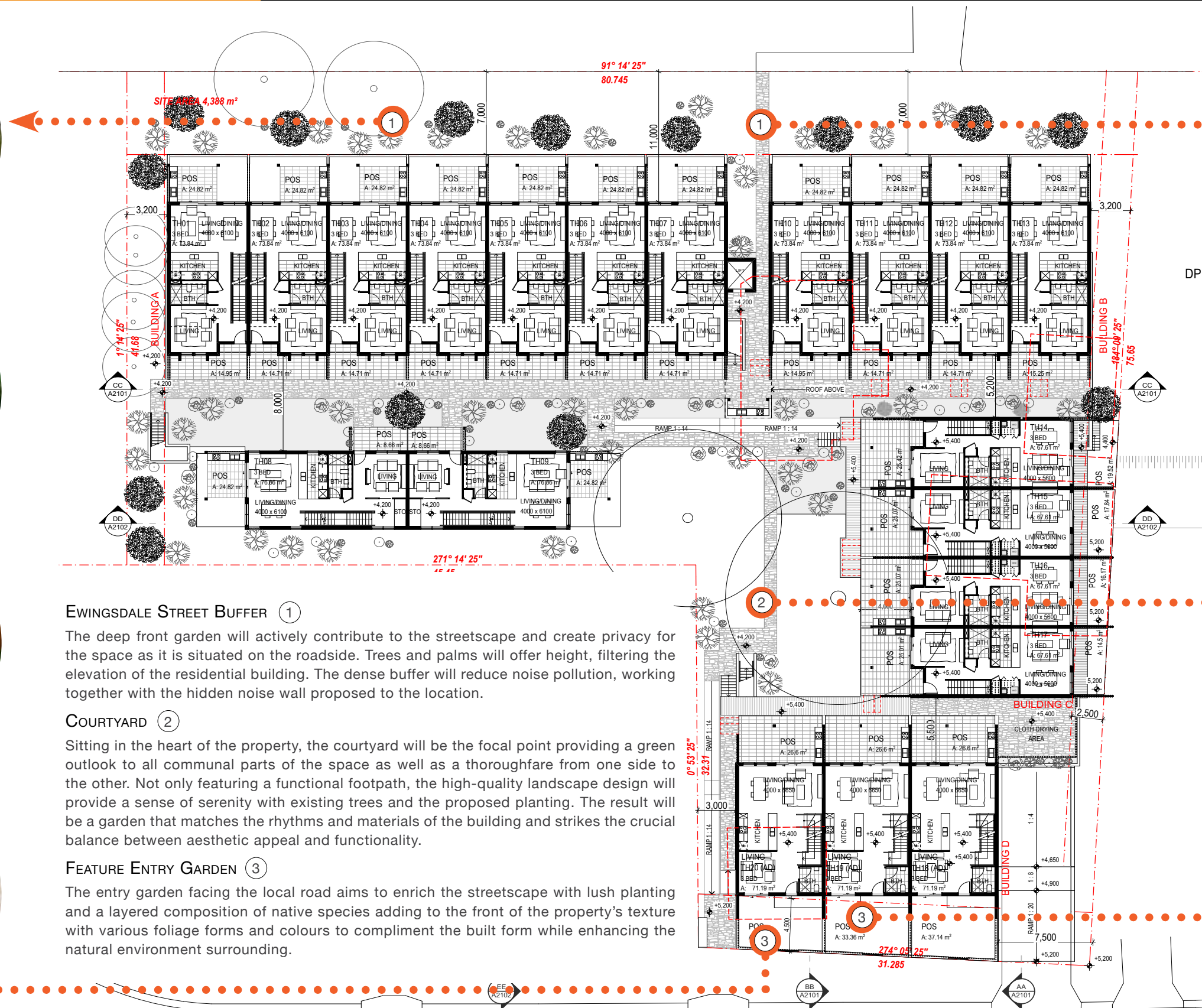
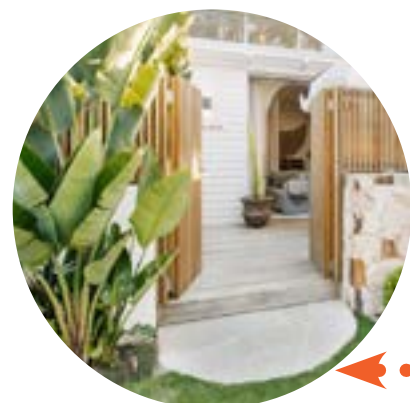
Date: AUGUST, 2022
Scale: AS SHOWN
Rev: 01

Drawn: AB
Checked: LB

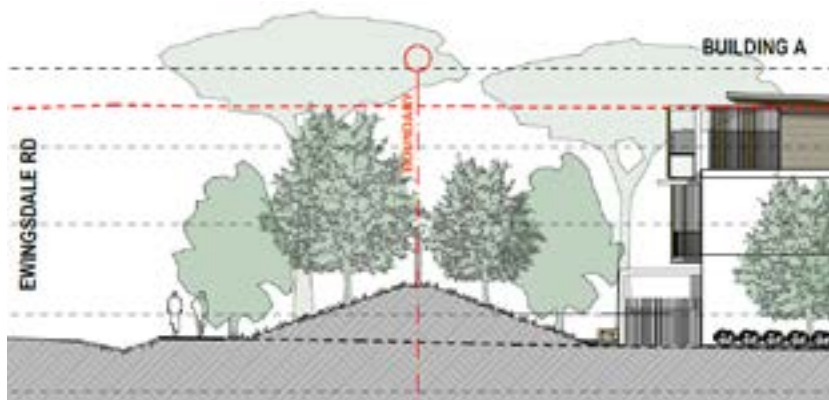
Page 2

Level 1 2247 Gold Coast Hwy
Nobby Beach
PO Box 204 Nobby Beach QLD 4218
Telephone: 07 5524 1500
Fax: 07 5524 1502
admin@planitconsulting.com.au

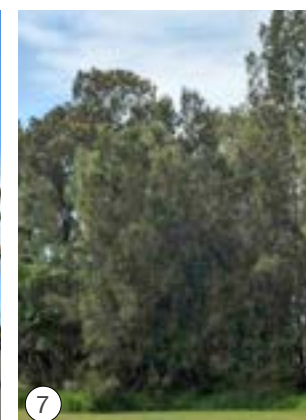




1	<i>Livistona australis</i>	Cabbage Tree Palm	11	<i>Hovea acutifolia</i>	Hovea	20	<i>Dianella caerulea</i>	Blue Flax Lilly
2	<i>Elaeocarpus reticulatus</i>	Blueberry Ash	12	<i>Leptospermum juniperinum</i>	Prickly Tea-tree	21	<i>Gahnia aspera</i>	Saw Sedge
3	<i>Melaleuca quinquenervia</i>	Broad-leaved Paperbark	13	<i>Leptospermum polygalifolium</i>	Tantoon	22	<i>Hibbertia scandens</i>	Snake Vine
4	<i>Lophostemon suaveolens</i>	Swamp Box	14	<i>Leptospermum trinervium</i>	Black Tea-tree	23	<i>Hardenbergia violacea</i>	Native Sarsaparilla
5	<i>Lophostemon confertus</i>	Brush Box	15	<i>Callistemon pachyphyllus</i>	Wallum Bottlebrush	24	<i>Lomandra longifolia</i>	Matrush
6	<i>Melicope elleryana</i>	Pink Dougwood	16	<i>Trochocarpa laurina</i>	Tree Health	25	<i>Lomandra hystrix</i>	Creek Matrush
7	<i>Allocasuarina torulosa</i>	Forest Oak	17	<i>Blechnum indicum</i>	Bungwall Fern	26	<i>Pteridium esculentum</i>	Bracken Fern
8	<i>Cordyline stricta</i>	Narrow-leaved Palm Lilly	18	<i>Centella asiatica</i>	Pennywort	27	<i>Schoenoplectus validus</i>	Clubrush
9	<i>Duboisia myoporoides</i>	Corkwood	19	<i>Cyperus polystachyos</i>	Flat Sedge	28	<i>Xyris complanata</i>	Yellow-eyed Grass
10	<i>Hibiscus diversifolius</i>	Swamp Hibiscus						



Trees / Palms



Small Trees / Shrubs



Small Trees / Shrubs



Groundcovers



Groundcovers





C O N S U L T I N G

PREPARED BY PLANIT CONSULTING | INFO@PLANITCONSULTING.COM.AU | WWW.PLANITCONSULTING.COM.AU